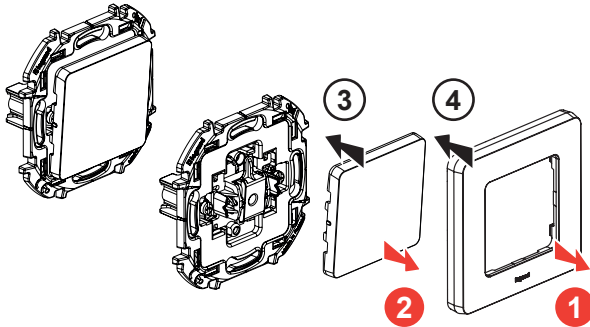


# INSPIRIA™

6 736 00/01/02/03/10/11/12/13/20/21/22/23/30/31/32/33/40/41/42/43/50/51/52/53  
 6 736 60/61/62/63/70/71/72/73/80/81/82/83/90/91/92/93



6 736 00/01/02/03

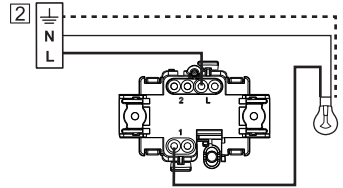


1 OFF

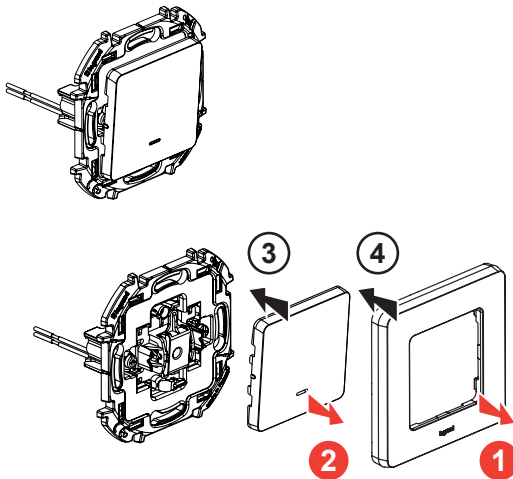
**10 AX, 250 B~**

≤ 2,5 mm<sup>2</sup>

13 mm



6 736 10/11/12/13

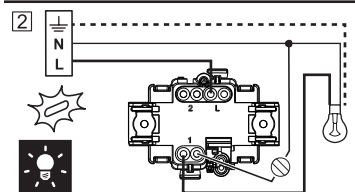
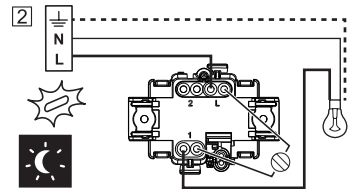


1 OFF

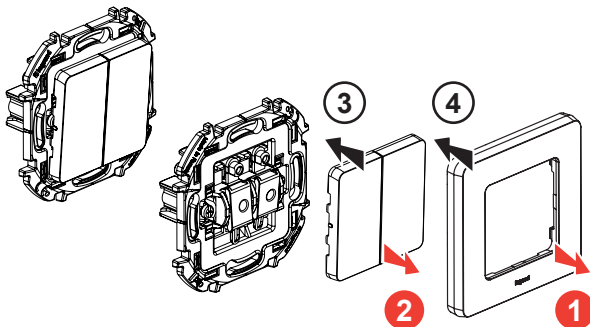
**10 AX, 250 B~**

≤ 2,5 mm<sup>2</sup>

13 mm



6 736 20/21/22/23

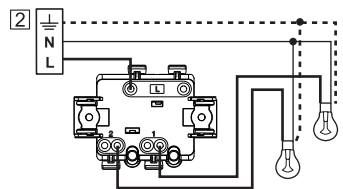


1 OFF

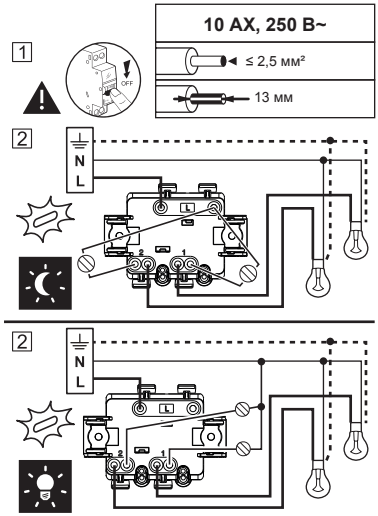
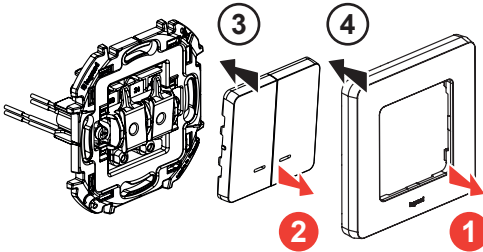
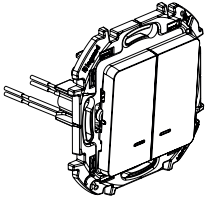
**10 AX, 250 B~**

≤ 2,5 mm<sup>2</sup>

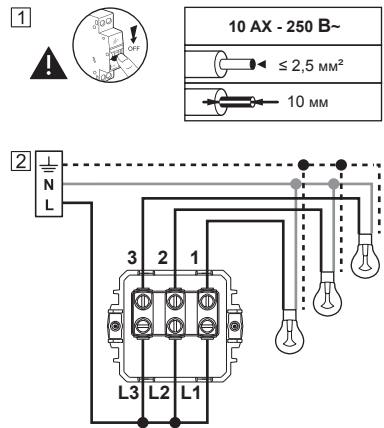
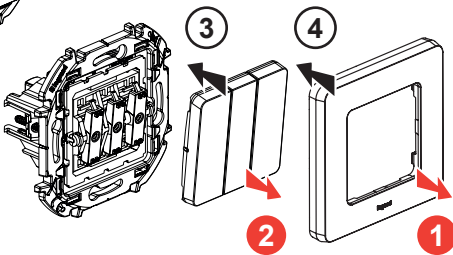
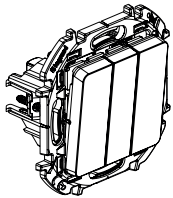
13 mm



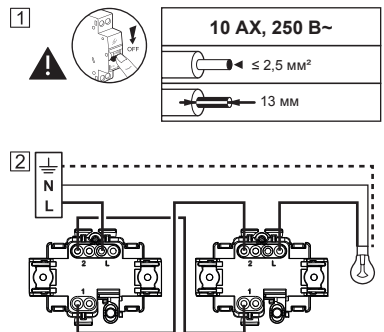
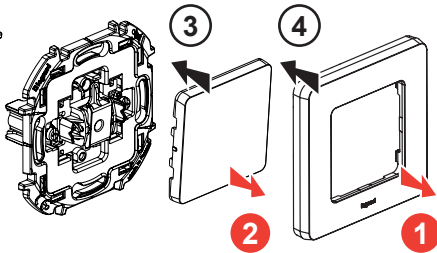
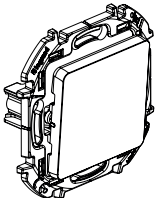
6 736 30/31/32/33



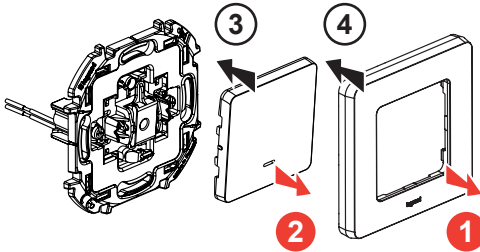
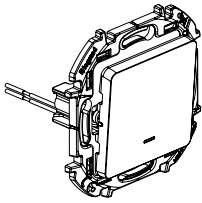
6 736 40/41/42/43



6 736 50/51/52/53



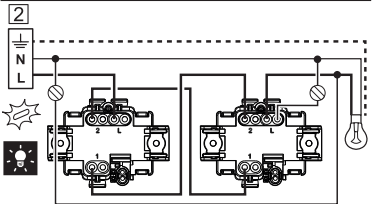
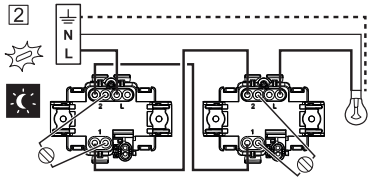
6 736 60/61/62/63



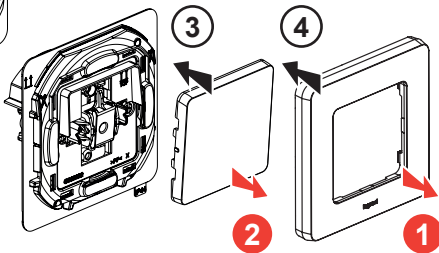
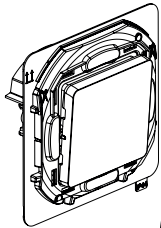
1 **10 AX, 250 B~**

$\leq 2,5 \text{ mm}^2$

13 mm



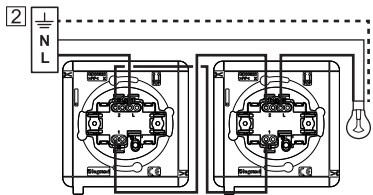
6 736 70/71/72/73



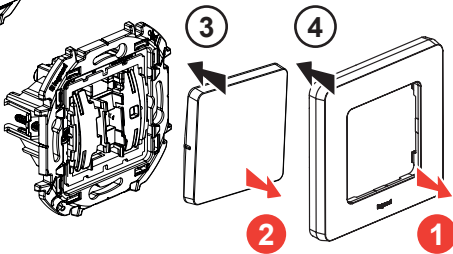
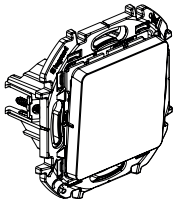
1 **10 AX, 250 B~, IP44**

$\leq 2,5 \text{ mm}^2$

13 mm



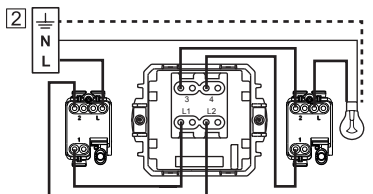
6 736 80/81/82/83



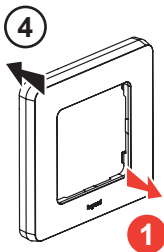
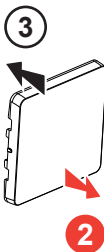
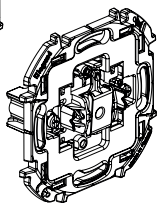
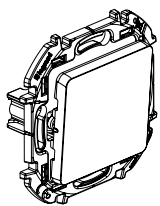
1 **10 AX, 250 B~**

$\leq 2,5 \text{ mm}^2$

10 mm



6 736 90/91/92/93



1



6 A, 250 B~

≤ 2,5 MM<sup>2</sup>

13 MM

2

N

L

